

St Albans Church, Eastbourne Project Kuhu Mai – Come on in!

Introduction

To bring our ambitious Project **Kuhu Mai** to life, St Alban's Anglican Church, Eastbourne Parish has exciting plans to return to its Church and Hall in Ngaio Street in the next two years and needs your support to make this happen!

The Church and Hall buildings were closed in 2016 when they were assessed as being earthquake prone (less than 34% New Building Standard (NBS)).



St Alban's Church

Our plans to earthquake strengthen our Church and Hall to above 34% of NBS have now been approved by the Wellington Anglican Diocese and the very important phase of raising the funds needed, and commencing detailed design of the strengthening work, has begun.

Read on to hear about project Kuhu Mai, what this will mean for the Parish and the Eastbourne community, an outline of the strengthening proposed for the buildings, and how you can help towards preserving the best of the past, and being ready for the future!!



Parish Hall

Kuhu Mai – Come on in!

Project Kuhu Mai – Come on in! will open the doors of St Alban's to the whole community and provide a space that can be shared by all.

Our vision is of a Church come alive again. A place, which is open 7 days a week; a Church where people come and go; a Church where everyone finds belonging no matter 'who', 'what' or 'how' they are; a Church working in partnership with community to connect people with each other and with God.



Christmas All-sorts Service 2024

Since 2024, the Parish has begun to live out radical manaakitanga through deliberate invitation and hospitality. Green shoots have begun to appear in Parish life and the church is growing. Community focussed events have increased and are gaining momentum.



For our community!

When strengthened, the Church building will provide for Worship and gatherings such as concerts and recitals and the Hall will be a space for Parish and wider Community - think film nights, dances, a repair café, playgroup, lunch group, youth group and a base to support the many activities that Eastbourne provides, as well as for our current activities such as Pop-in-and-Play and Take-a-Break. Space is always at a premium in Eastbourne, and we believe a low-cost quality space will really help the community to connect and thrive.

Strengthening the Buildings

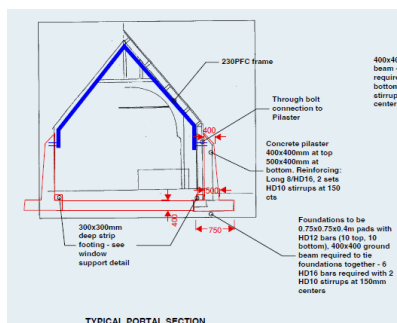
To achieve our vision, we need buildings that are fit for purpose and safe to use. The existing Church and Hall are well loved and have been at the centre of Eastbourne life for over 100 years. But they need to be earthquake strengthened to make them safe for users, and refreshed to make them comfortable to use. The Church is an iconic historic building dating from 1910 and designed in the arts and crafts style by well-known architect Frederick de Jersey Clere.

We are developing our plans for the earthquake strengthening, and the designs will be complete by early 2026.

This will involve adding steel frames inside the Church and concrete buttresses to the outside of the walls, as well as steel supports to the side walls.

The Hall will be strengthened by providing a new roof diaphragm and bracing the brick end walls with steelwork.

The buildings will be refreshed by redecorating them inside and out and by providing improved storage to the Hall. The existing commercial kitchen, office and toilets will be redecorated but do not need to be strengthened.



Strengthening the Church

How much will this cost and how will it be paid for?

The estimated cost of the project is \$1.3M.

This will be funded by a mixture of using existing money in the St Alban's Parish Trust, alongside fundraising, grants and events.

We are applying for grants from various charitable trusts and the Lotteries Commission.

We have set a target of \$250,000 to be raised by fundraising, excluding grants and money from the Parish Trust, which we think is achievable.

Even before launch of our appeal, we have received generous donations of over \$40,000 towards this target, so have made a strong start!

When will this happen?

Our plan is to raise funds for the project and carry out detailed design this year and to start construction work in mid-2026 allowing time for consents and getting a contractor on board.

The key dates are:

- Fundraising – July to December 2025
- Design and consents – August 2025 to March 2026
- Construction – mid-2026 to mid-2027

Fundraising

We aim to raise funds to achieve our target by:

- Donations from within the Parish
- Donations from people with connections to St Alban's - through baptism, marriage or funerals at the Church or with relatives in the Memorial Wall, or those who have previously attended St Alban's and still feel connected.
- Donations from members of the Eastbourne Community and local businesses who value our historic church and share our vision to use the hall as a community space for everyone to use.
- Money raised by events organised by St Alban's to bring fun and engagement with the community.



Making Cookies at Matariki

How can I help?

You can either donate now, or pledge to make a future donation (see details on the right- hand side of this page) - whichever suits you best.

You can also help with your time and energy by getting involved in the many activities we're planning for the remainder of 2025....

All funds donated will be held in a special account until they are spent on the project.

Online donations:

You can make an online donation to:

Account name: **Parish of Eastbourne**
Account Number: **02-0500-0821577-01**
Code: **Earthquake fund**
Reference: **Your name and initial**

Pledges:

You can make a pledge by completing below.

I/we pledge three equal payments of \$.....in 2025, 2026 and 2027. St Alban's will contact you later in the year to arrange for you to activate your pledge.

Please supply the following details:

Name(s):

Signature(s):

Phone Number:

Address or email:

Please send your completed donation or pledge form to:

***The Treasurer, Parish Office, St Alban's Church,
11 Ngaio Street, Eastbourne, Lower Hutt, 5013.***

or email it to the Treasurer at:

treasurer@stalbanschurch.nz

Income Tax Receipts:

St Alban's will issue income tax receipts for you to reclaim your income tax on the donation at the end of the financial year in which the donation is made.

Thank you for being part of the future of Eastbourne and St. Alban's Church!